




## TECHNICAL DATA PACKAGE

### *CAT'S CLAW EXTRACT 3%*

Product Specification Sheet .....	1
Allergen Statement .....	2
Manufacturing Process Flow Chart .....	3
Safety Data Sheet .....	4
Additional information .....	9

## PRODUCT SPECIFICATION SHEET

<b>IDENTIFICATION</b>			
NAME	CAT'S CLAW EXTRACT 3%		
BOTANICAL NAME	<i>Uncaria tomentosa Willd DC</i>		
PART USED	Bark		
SHELF LIFE	3 Years / 36 Months		
SOLVENT USED	Ethanol 70%/ Purified water 30%		
EXTRACTION RATIO	10:1		
COUNTRY OF ORIGIN OF PRODUCT	Peru		
COUNTRY OF ORIGIN OF BIOMASS	Peru		
<b>PHYSICAL &amp; CHEMICAL ANALYSIS</b>			
<u>PARAMETER</u>		<u>SPECIFICATION</u>	<u>METHODS</u>
1	APPEARANCE	Light reddish powder	Visual
2	ODOUR & TASTE	Characteristic	Organoleptic
3	HUMIDITY	NMT 8,0%	Internal method I-CDC-008
4	PARTICLE SIZE	NLT 98,5% 100 Mesh	Internal method
5	% ACTIVE PRINCIPLES	Total oxindolic alkaloids NLT 3,0%	HPLC
<b>MICROBIOLOGICAL CONTROL</b>			
<u>PARAMETER</u>		<u>SPECIFICATION</u>	<u>METHODS</u>
	TOTAL AEROBIC MESOPHILES COUNT	NMT 3000 CFU/g	AOAC Official Method 990.12
	MOLD COUNT	NMT 300 CFU/g	AOAC Official Method 997.02
	YEAST COUNT	NMT 300 CFU/g	AOAC Official Method 997.02
	E. COLI	<10 cfu/g	AOAC Official Method 991.14
	SALMONELLA	Absent/25g	AOAC Official Method 989.13
	STAPHYLOCOCCUS AUREUS	Absent/g	Icmsf 2DA. Ed. 1983 Vol.1, Part II, Method 5
	PSEUDOMONAS AERUGINOSA	Absent/g	Clinical microbiology Ed. Lennette the 3 <sup>rd</sup> Pag 356-389
<b>CONTAMINANTS</b>			
<u>PARAMETER</u>		<u>SPECIFICATION</u>	<u>METHODS</u>
	HEAVY METALS		
	LEAD (Pb)	NMT 1,0 ppm	Mercury, Lead and Arsenic. NOM – 117 – SSA1 – 1994 Goods and services. Test methods for the determination of Cadmium, Arsenic, Lead, Iron, Zinc and Mercury in food, drinking water and purified water by atomic absorption spect.
	CADMIUM (Cd)	NMT 1,0 ppm	
	MERCURY (Hg)	NMT 0,1 ppm	
	ARSENIC (As)	NMT 0,5 ppm	
<p><u>STORAGE CONDITIONS:</u> UNDER COOL AND DRY CONDITIONS AWAY FROM HEAT AND DIRECT EXPOSURE TO SUNLIGHT. TEMPERATURE 20-25°C AND RELATIVE HUMIDITY 45-65%.</p> <p><u>MANUFACTURING SITE:</u> THIS MATERIAL HAS BEEN CUSTOM MADE AND PROCESSED IN URBANIZACIÓN LAS PRADERA DE LURÍN, LAS GARDENIAS MZ I LTE. 12, LIMA, PERÚ. TO MEET SUANFARMA SPECIFICACIONES.</p>			
 José Manuel Crespo Quality Head - Nutra Division SUANFARMA			

## ALLERGEN STATEMENT

We, Suanfarma, hereby declare the absence or presence of each allergen or intolerance according to the major Food Allergens specified in the US Federal Law of Food Allergen Labeling and Consumer Protection Act of 2004 (FALCPA) and EU Directive 2003/89/CE amending EU Directive 2000/13/CE in the table below for **CAT'S CLAW EXTRACT 3%**:

SUBSTANCES OR PRODUCTS CAUSING ALLERGIES OR INTOLERANCES as per Annex II of FIC regulation	Direct incorporation as a base raw material or in derivative form (including the carriers, the additives, and the processing aids)		Presence on the production line		Presence in the productions workshop		Presence on the production factory	
	Yes (precise nature)	No	Yes (precise nature)	No	Yes (precise nature)	No	Yes (precise nature)	No
Cereals containing gluten (1) and products thereof		X		X		X		X
Crustaceans and products thereof		X		X		X		X
Eggs and products thereof		X		X		X		X
Fish and products thereof		X		X		X		X
Peanuts and products thereof		X		X		X		X
Soybeans and products thereof		X		X		X		X
Milk and products thereof (including lactose)		X		X		X		X
Nuts (2) and products thereof		X		X		X		X
Celery and products thereof		X		X		X		X
Mustard and products thereof		X		X		X		X
Sesame seeds and product thereof		X		X		X		X
Sulphur dioxide and sulphites at concentrations of more than 10mg/kg or 10mg/l expressed as SO <sub>2</sub>		X		X		X		X
Lupin and products thereof		X		X		X		X
Mollusc and products thereof		X		X		X		X

**NOTES TO THE TABLE:**

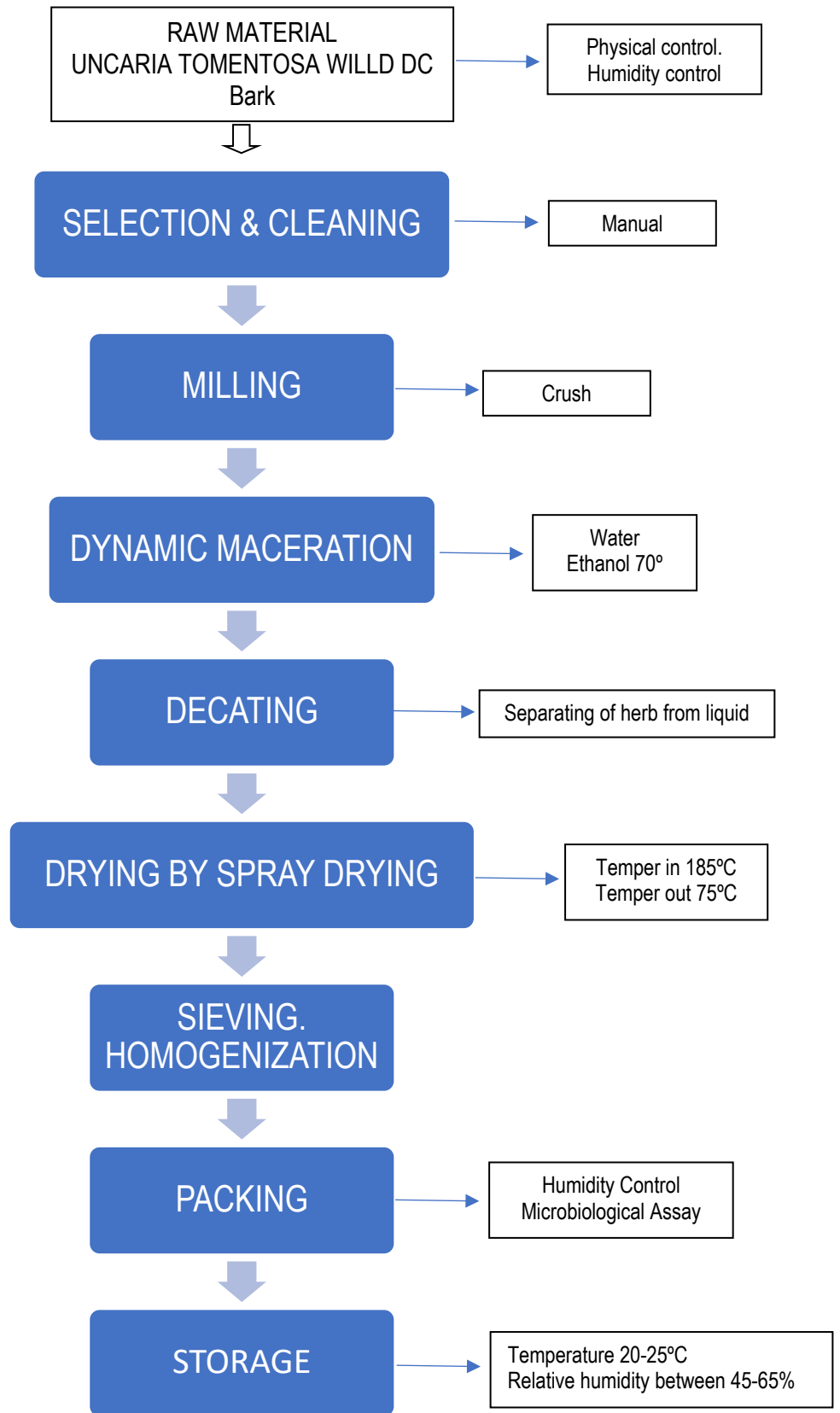
- (1) Cereals containing gluten, namely: wheat, rye, barley, oats, spelt, kamut or their hybridized strains, and products thereof, except:
  - a. Wheat based glucose syrups including dextrose.
  - b. Wheat based maltodextrin.
  - c. Glucose syrups based on barley.
  - d. Cereals used for making alcoholic distillates including ethyl alcohol of agriculture origin.
- (2) Namely, almonds (*Amygdalus communis* L.), hazelnuts (*Corylus avellana*), walnuts (*Juglans regia*), cashews (*Anacardium occidentale*), pecan nuts (*Carya illinoensis* (Wangenh.) K. Koch), Brazil nuts (*Bertholletia excelsa*), pistachio nuts (*Pistacia vera*), macadamia or Queensland nuts (*Macadamia ternifolia*), and products thereof, except for nuts used for making alcoholic distillates including ethyl alcohol of agricultural origin.



José Manuel Crespo  
Quality Head – Nutra Division  
SUANFARMA

**MANUFACTURING PROCESS FLOW CHART**

**Product Name:** CAT'S CLAW EXTRACT 3%



SAFETY DATA SHEET  
(According to Regulation 453/2010)**SECTION 1: PRODUCT & COMPANY IDENTIFICATION****1.1 Product Identifier:**

Product Name: Cat's Claw Extract 3%

**1.2 Supplier details:**Supplier Name: Suanfarma, Inc.  
17-09 Zink Place, Unit 7, Fair Lawn,  
NJ 07410, USA  
Phone: +1-201-343-1188  
Fax: +1-201-343-1102  
E-mail: [adminus@suanfarma.com](mailto:adminus@suanfarma.com)**1.3 Emergency number:**CHEMTREC (24hr Access) 800-424-9300  
International CHEMTREC, call: +1-703-527-3887**1.4 1.4. Use of the substance or mixture:**

Food supplement

**SECTION 2: COMPOSITION/INFORMATION ON INGREDIENTS****2.1 Component**

Substance	Uncaria tomentosa Willd DC
CAS	-
EINECS Number	-

**SECTION 3: HAZARD(S) IDENTIFICATION**

A substance with no restrictions on showing its risk classification on the label. It is not known to present any risk to human or animal health or to the environment.

SAFETY DATA SHEET  
(According to Regulation 453/2010)**SECTION 4: PRECAUTIONS FOR SAFE HANDLING AND USE****4.1 First aid measures:**

In case of accidental exposure, immediate medical attention is not required. No first aid procedures are required. No medical consultation is needed.

**SECTION 5: FIRE AND EXPLOSION HAZARD DATA**

Extinguish with water. Comply with the regulatory security measures. If kept in stacked containers, embers or red-hot coals may form.

**SECTION 6: ACCIDENTAL RELEASE MEASURE**

No special devices, accessories, or security measures are required to clean areas where the powder has spilled out. The recovered material can be discarded as organic waste.

**SECTION 7: HANDLING AND STORAGE**

Advice on safe handling:  
Storage Conditions:

Handle with care  
Temperature 20-25°C;  
Relative humidity 45-65%

SAFETY DATA SHEET  
(According to Regulation 453/2010)**SECTION 8: EXPOSURE CONTROLS & PERSONAL PROTECTION**

Exhibition limits	Undetermined and at present not applicable
Exhibition Control	No data
Prevention and control of the exhibition labor	Wear simple dust masks and suitable protective clothing

**SECTION 9: PHYSICAL AND CHEMICAL PROPERTIES.****Appearance:**

Physical state:	Solid.
Form:	Powder.
Colour:	Light reddish
Odour:	Characteristic

**Data relevant to safety:**

pH:	Not available.
Vapor Pressure:	Not available.
Vapor Density:	Not available.
Evaporation rate:	Not available.
Viscosity:	Not available.
Boiling Point:	Not available.
Decomposition Temperature:	Not available.
Solubility:	Not available.
Specific Gravity/Density:	Not available.

**SECTION 10: STABILITY AND REACTIVITY DATA**

Conditions to avoid:	High humidity and high temperature damage the quality of the product.
Materials to avoid:	Flammable substances, contaminants, hazardous and biologically active compounds.
Hazardous decomposition products:	Not known.

SAFETY DATA SHEET  
(According to Regulation 453/2010)**SECTION 11: TOXICOLOGICAL INFORMATION**

Information not available.

**SECTION 12: ECOLOGICAL INFORMATION**

Biodegradable substance with no adverse effects to the environment or public health reported.

**SECTION 13: DISPOSAL CONSIDERATIONS**

Elimination appropriate methods                      The adapted for to produce in dust

**SECTION 14: TRANSPORT INFORMATION**

To comply norm for the carriage of emulated dry material.



SAFETY DATA SHEET  
(According to Regulation 453/2010)**SECTION 15: REGULATORY INFORMATION**

Not applicable

**SECTION 16: OTHER INFORMATION****Further information**

This information is based upon the present state of our knowledge. This SDS had been complied and is solely intended for this product.

**Notice to reader**

Employers should use this information only as a supplement to other information gathered by them and should make independent judgement of suitability of this information to ensure proper use and protect the health and safety of employees. This information is furnished without warranty and any use of the product not in conformance with this Safety Data Sheet or in combination with any other product or process is the responsibility of the user.

The information above is believed to be accurate and represents the best information currently available to us. However, we make no warranty of merchantability or any other warranty, express or implied, with respect to such information and we assume no liability resulting from its use, users should make their own investigations to determine the suitability of the information for their purposes. In no way shall the company be liable for any claims, losses, or damages of any third party or for lost profits or any special, indirect, incidental, consequential or exemplary damages, howsoever arising, even if the company has been advised of the possibility of such damages.

## ADDITIONAL INFORMATION

We, SUANFARMA, hereby declare that CAT'S CLAW EXTRACT 3% is manufactured in accordance with the following guidelines:

- Botanical source: *Uncaria tomentosa Willd DC*
- The above material is manufactured in Peru.
- The biomass used is from Peru.
- No animal derived products have been used in the manufacture of the above material. In the manufacturing process no equipment in contact with material of animal origin are employed. For these reasons this material is free from components which can cause Bovine Spongiform Encephalopathy (BSE) or Transmissible Spongiform encephalopathy (TSE).
- The above material has not been genetically modified and is not obtained from genetically modified crops. GMO labelling is not required according to EU Regulation 834/2007.
- Only the following organic solvents are used in the manufacturing process: Ethanol
- The above material complies with the pesticide limits set forth by USP <561>.
- The above material complies with California Proposition 65 Compliance and is safe for human consumption.
- The above material complies with Aflatoxin limits fixed by USP.
- The above material is naturally free of products containing gluten.
- The above material is free from Melamine and PCB's.
- The above material is suitable for vegetarian and vegan consumption.
- This material has not been tested on animals.
- The above material does not contain nor comes in contact with banned substances listed by NSF, NFL, and WADA.
- The product does not contain any ingredient specified in Annex II of Allergen Regulation (UE) n°1169/2011: wheat, rye, barley, oat, spelt, kamut, crustacean, egg, fish, peanut, soybean, milk, nuts (almonds, hazelnuts, walnuts, cashew, pecan nuts, brazil nuts, pistachio nuts, macadamia), celery, mustard, sesame seeds, lupin, molluscs and products made thereof.
- The above material has not been irradiated per 7 CFR 205.105(f) requirements with understanding that "irradiation" shall be defined as outlined in 21 CFR 179.26.
- The above material and its raw material have not been treated with ethylene oxide (ETO) or any other chemical sterilization agent.
- At no point in the process is the above material is manufactured, handled, or comes in contact with sewage sludge, as defined in 7 CFR 205.105(g).
- The above material is Kosher and Halal certified.

Typical nutritional data for the above material are as follows:

PARAMETER	RESULT	UNITS
Carbohydrates	-	g/100g
Polyols	-	g/100g
Energy value	-	Kcal/100g
	-	KJ/100g



José M. Crespo  
Quality Head – Nutra Division  
SUANFARMA

Certificate Issued To:  
**Suan Farma, Inc.**  
17-09 Zink Place, Unit 7  
Fair Lawn, NJ 07410-2018  
USA

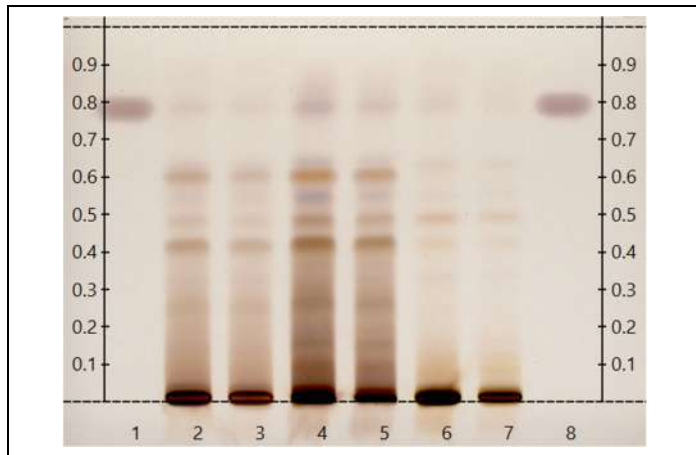


Exclusive Distribution by:  
**SUANFARMA**  
SUANFARMA  
17-09 Zink Place - Unit 7  
Fair Lawn, NJ 07410, USA  
Tel. +1-201-343-1188  
www.suanfarmausa.com

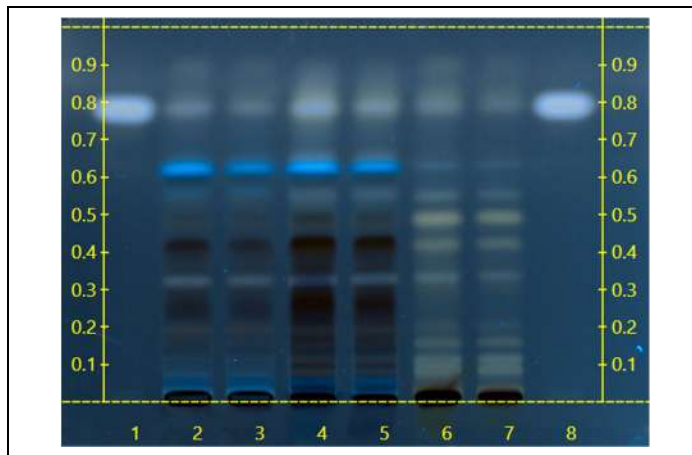
Work performed at:  
**Alkemist Labs**  
12661 Hoover Street  
Garden Grove, CA 92841  
714-754-HERB (4372)  
714-668-9972 (FAX)  
Sales@Alkemist.com  
www.Alkemist.com

**Certificate of Analysis: CAT'S CLAW EXTRACT 3% (22032292)**  
High Performance Thin-Layer Chromatography with Photo-Documentation

1



2



Company Name: Suan Farma, Inc.  
Title: CAT'S CLAW EXTRACT 3%  
Plant Part: bark  
Sample Received: 05/10/22  
Sample Packaging: Clear Reclosable Plastic Bag  
Form of Botanical: powdered extract  
Appearance: Fine Brown Powder  
Source Location: Peruvian Nature  
Lot Number: (22032292) → Lanes 4(2µl), 5(1µl)  
Sample: 22130TTU\_1  
Latin Name: *Uncaria tomentosa* (Willd.) DC. [Rubiaceae]  
Reference Sample: Lane 2(6µl) (Y05310MMH), Lane 3(6µl) (Y07905ELF1) *Uncaria tomentosa* (bark); Lane 6(6µl) (ADE30512TRO1), Lane 7(3µl) (ADE30512TRO1) *Uncaria guianensis* (bark); held at Alkemist Labs, Garden Grove, CA.  
Analyst: J.Mares, K.Chopra, K.Montoya, K.Tran, M.Levine, N.Carson, N.Hoang, N.Afendikova, P.Hoang, S. Kabbaj, S.Sudberg, T.Louis, D.Robinson 176133  
Sample Preparation: 0.3g+3mL 70% grain Ethanol, sonicate/heat at 50° C for 30 min.  
Stationary Phase: Silica gel 60, HPTLC plates  
Mobile Phase: ethyl acetate: Methanol: Formic Acid: Water [10/0.27/0.3/0.5]  
Detection: (1) 10% Sulfuric, 100°C, 2min, Vis (Reich, E., 2007)  
(2) 10% Sulfuric, 100°C, 2min, 366nm (Reich, E., 2007)  
Reference Standard: Lanes 1(3µl) and 8(3µl) Uncarine C (105191111, Phyto)  
Reference Source: BTM-715-0540  
IDT-SOP-72-01

**Comments & Conclusions:** Lanes 4, 5 are the test sample CAT'S CLAW EXTRACT 3% (22032292). Lanes 2, 3, 6, 7, are the reference samples used for comparison. This test sample, CAT'S CLAW EXTRACT 3% (22032292) is consistent with the chromatographic profile of the reference samples of *Uncaria tomentosa*, used above. **This test sample CAT'S CLAW EXTRACT 3% (22032292) has characteristics of *Uncaria tomentosa* bark.**

**NOTE:** The above conclusion may be a function of the natural variance found in botanicals &/or the extraction process used to create specific extracts. The growing and drying conditions, age, seasonal variations, geographic location, extraction solvents, etc. all play a role in the phytochemical fingerprint of botanicals as well as their extracts; hence, chromatographic variations are expected.

Examined, Reviewed & Authorized by: Khanh N Tran, HPTLC, R&D Supervisor, Alkemist Labs

Report Date: 05/16/22



Note: Any unidentified lanes in the above chromatograms are confidential and may represent internal studies or other test samples not related to 22032292. This report applies to the sample investigated and is not necessarily indicative of the quality or condition of apparently identical or similar products. This report is for the exclusive use of the party who requested the report and not for public dissemination or use by third parties, including for promotional purposes, without the prior written permission of Alkemist Labs, Inc. This report provides technical results for a specific sample and the report shall not be altered, modified, supplemented or abstracted in any manner. Any violation of these conditions renders the report and its results void. © 2022 Alkemist Labs, Inc. All Rights Reserved

CAT'S CLAW EXTRACT 3%  
TP REVISION R1.2022

# Nutri Analytical Testing Laboratories

1440 S State College Blvd., Suite 4G, Anaheim CA 92806

Tel: 714-398-8166 Email: info@nutrianalytical.com

Website: [www.nutrianalytical.com](http://www.nutrianalytical.com)

## Laboratory Report

**Suan Farma**

17-09 Zinc Place, Unit 6&amp;7

Fair Lawn, NJ 07410, USA

Email: josecrespo@suanfarma.com

Attn: Jose Crespo

Received Date: 06/21/2022

Report Date: 07/11/2022

Client Sample Description: Cat's Claw 3% Lot #22032292

Test ID #: 202206035-1

Analyses	Claim	Result
Total Oxindolic alkaloids	>3%	3.58%

Method: UHPLC

Nutri Analytical Testing Laboratories



Lab. Manager: Ling Zhang

# Nutri Analytical Testing Laboratories

1440 S State College Blvd., Suite 4G, Anaheim CA 92806

Tel: 714-398-8166 Email: info@nutrianalytical.com

Website: [www.nutrianalytical.com](http://www.nutrianalytical.com)

## Laboratory Report

**Suan Farma**

17-09 Zinc Place, Unit 6&amp;7

Fair Lawn, NJ 07410, USA

Email: josecrespo@suanfarma.com

Attn: Jose Crespo

Received Date: 06/21/2022

Report Date: 07/11/2022

Client Sample Description: Cat's Claw 3% Lot #22032292

Test ID #: **202206035-1**

Analyses	Limit	Result	Pass/Fail
<b>Residual Solvents-Class 1</b>			
Benzene	2 ppm	Not Detected	Pass
Carbon Tetrachloride	4 ppm	Not Detected	Pass
1,2-Dichloroethane	5 ppm	Not Detected	Pass
1,1-Dichloroethene	8 ppm	Not Detected	Pass
1,1,1 Trichloroethane	10 ppm	Not Detected	Pass
<b>Residual Solvents-Class 2a</b>			
Acetonitrile	410 ppm	Not Detected	Pass
Chlorobenzene	360 ppm	Not Detected	Pass
Cumene	70 ppm	Not Detected	Pass
Cyclohexane	3880 ppm	Not Detected	Pass
1,2-Dichloroethene	1870 ppm	Not Detected	Pass
Methylene Chloride	600 ppm	Not Detected	Pass
1,4-Dioxane	380 ppm	Not Detected	Pass
Methanol	3000 ppm	Not Detected	Pass
Methylcyclohexane	1180 ppm	Not Detected	Pass
Methylisobutylketone	5000 ppm	Not Detected	Pass
Tetrahydrofuran (THF)	720 ppm	Not Detected	Pass
Toluene	890 ppm	Not Detected	Pass
Xylenes	2170 ppm	Not Detected	Pass
<b>Residual Solvents-Class 2b</b>			
Chloroform	60 ppm	Not Detected	Pass
1,2-Dimethoxyethane	100 ppm	Not Detected	Pass
Hexane	290 ppm	Not Detected	Pass
Methylbutylketone	50 ppm	Not Detected	Pass
Nitromethane	50 ppm	Not Detected	Pass
Pyridine	200 ppm	Not Detected	Pass
Tetralin	100 ppm	Not Detected	Pass
Trichloroethylene	80 ppm	Not Detected	Pass

Continue to page 2 of 2

**Residual Solvents-Class 3**

n-Pentane	5000 ppm	Not Detected	Pass
Ethanol	5000 ppm	943 ppm	Pass
Diethyl ether	5000 ppm	Not Detected	Pass
Acetone	5000 ppm	Not Detected	Pass
2-Propanol	5000 ppm	Not Detected	Pass
Ethyl Formate	5000 ppm	Not Detected	Pass
Methyl Acetate	5000 ppm	Not Detected	Pass
Methyl-tert-butyl ether (MTBE)	5000 ppm	Not Detected	Pass
1-Propanol	5000 ppm	Not Detected	Pass
Ethyl Acetate	5000 ppm	Not Detected	Pass
2-Butanone (MEK)	5000 ppm	Not Detected	Pass
2-Butanol (sec-butyl-alcohol)	5000 ppm	Not Detected	Pass
Isobutanol (2-Methyl-1-propanol)	5000 ppm	Not Detected	Pass
Isopropyl Acetate	5000 ppm	Not Detected	Pass
n-Heptane	5000 ppm	Not Detected	Pass
1-Butanol	5000 ppm	Not Detected	Pass
Propyl Acetate	5000 ppm	Not Detected	Pass
4-Methyl-2-pentanone (MIBK)	5000 ppm	Not Detected	Pass
3-Methyl-1-butanol	5000 ppm	Not Detected	Pass
Isobutyl Acetate	5000 ppm	Not Detected	Pass
1-Pentanol	5000 ppm	Not Detected	Pass
Butyl Acetate	5000 ppm	Not Detected	Pass
Dimethyl sulfoxide (DMSO)	5000 ppm	Not Detected	Pass
Anisole	5000 ppm	Not Detected	Pass
Total Class 3 Residual Solvents	5000 ppm	<5000 ppm	Pass

Method: USP<467>

\*Methanol Not Detected <5ppm

\*Others Not Detected <1ppm

Exclusive Distribution by:

**SUANFARMA**

SUANFARMA  
17-09 Zink Place - Unit 7  
Fair Lawn, NJ 07410, USA  
Tel. +1-201-343-1188  
www.suanfarmausa.com

Nutri Analytical Testing Laboratories



Lab. Manager: Ling Zhang